

## SIMPLE WESTERN CERTIFIED ANTIBODY DATASHEET

[View  
Antibody Link](#)

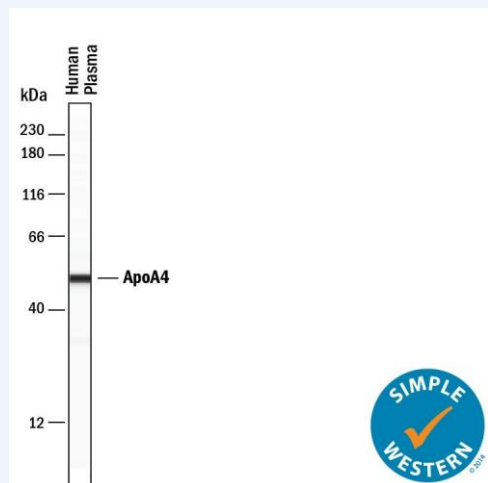


Figure1 Simple Western lane view shows lysates of human plasma, loaded at 0.2 mg/mL. A specific band was detected for Apolipoprotein A-IV/ApoA4 at approximately 51 kDa (as indicated) using 20 µg/mL of Mouse Anti-Human Apolipoprotein A-IV/ApoA4 Monoclonal Antibody (Catalog # MAB8125). This experiment was conducted under reducing conditions and using the 12-230 kDa separation system.

PROTEIN TARGET/ANTIBODY	
Protein Target	Apolipoprotein A-IV/ApoA4
Protein Isoform	Apolipoprotein A-IV/ApoA4 Antibody (988829) [Unconjugated]
Antibody Type	Primary
Host Species/Clonality	Mouse Monoclonal
ASSAY	
Sample Type	Human Plasma 0.2 mg/mL
Sample Concentration	0.2 mg/mL
Antibody Concentration/Dilution	20 µg/mL
Antibody Diluent	
Detection Mode	Chemiluminescence
Separation Type	Size
Matrix	12-230 kDa
Observed kDa	51 kDa
Publications	None listed

This antibody is validated for Gel-Free, Blot Free, Hands Free Simple Western Systems. To learn about Simple Western Systems, available Simple Western antibodies, or new antibody submissions visit the links below. For additional information, please contact [support@proteinsimple.com](mailto:support@proteinsimple.com).

[Simple Western Systems](#)

[Simple Western Antibody Database](#)

[Simple Western Antibody Submission](#)